

### ROAD CONDITIONS

Phone (Toll Free): (877) 874-ROADS  
(877) 687-6237  
Web Site: www.nvroads.com

### Radio Frequencies

Carson City	1610 AM
Lake Tahoe	530 AM
Las Vegas	1610 AM
Reno	530 AM

### NDOT PUBLIC INFORMATION

Phone: (775) 888-7000  
Fax: (775) 888-7115  
Web Site: www.nvdot.net

### BICYCLE INFORMATION

Phone: (775) 888-RIDE  
Web Site: www.bicyclenevada.com

### NDOT DISTRICT OFFICES

Ely	(775) 777-2700
Las Vegas	(702) 289-1700
Las Vegas	(702) 385-6500
Primm	(702) 834-8333
Tonopah	(775) 482-2301
Winnemucca	(775) 623-8000

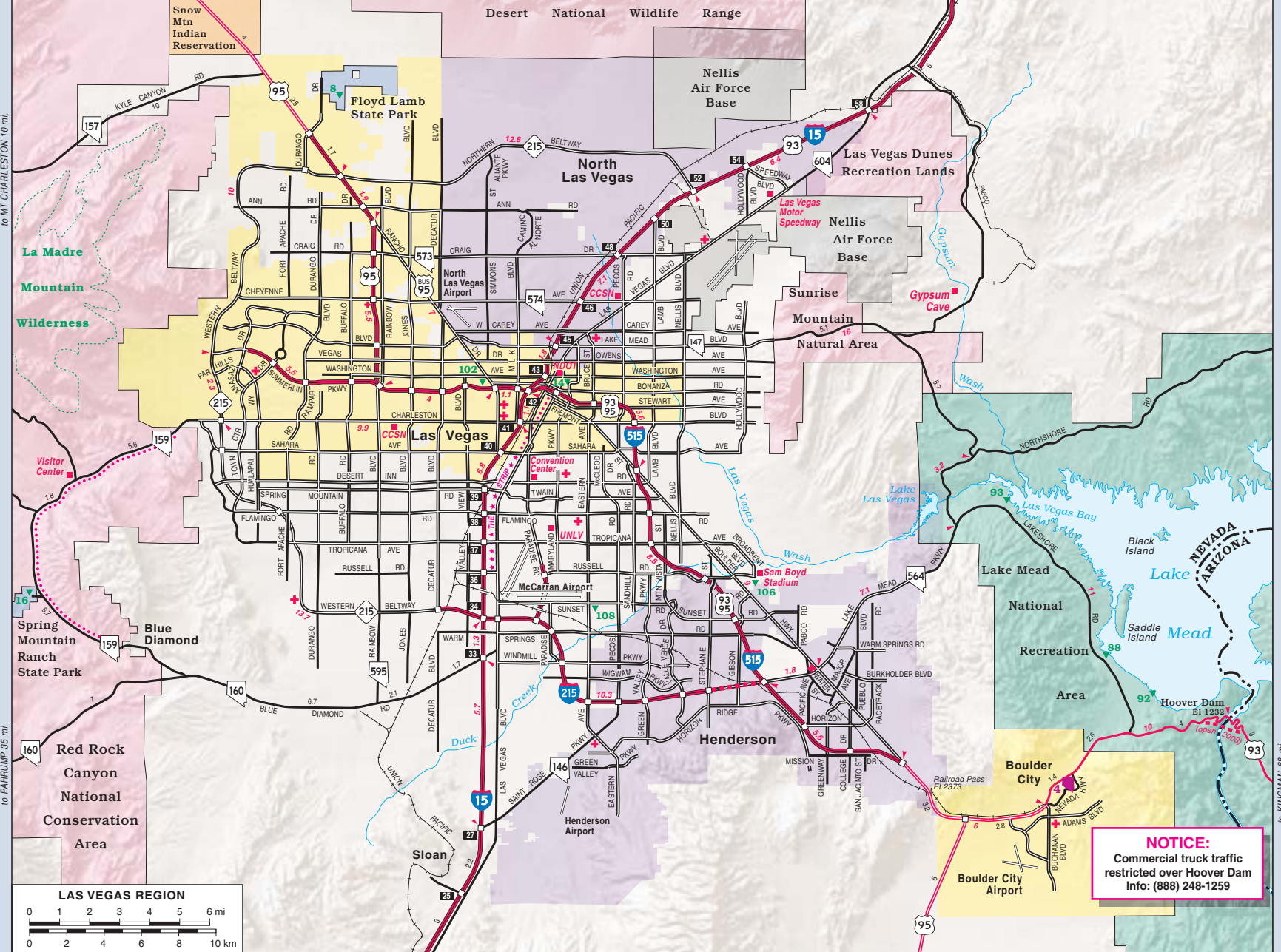
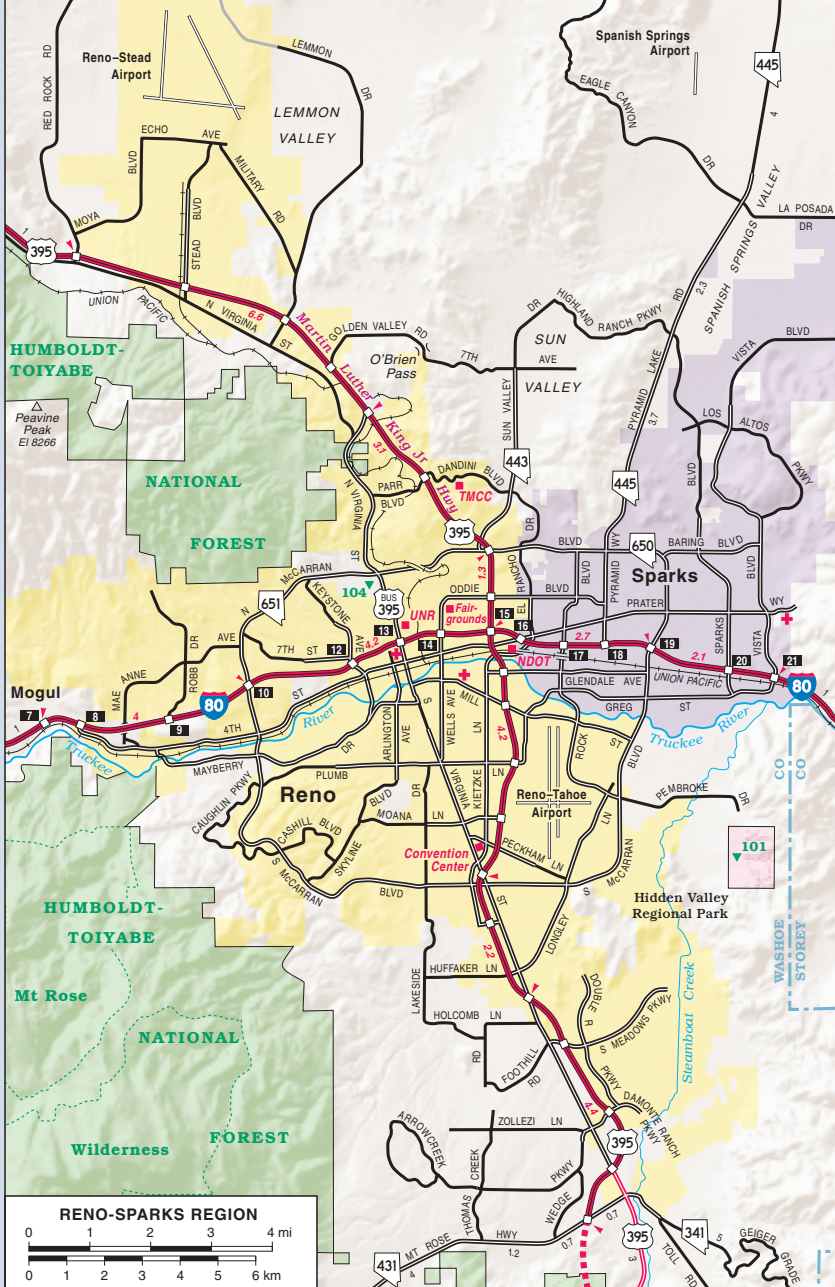
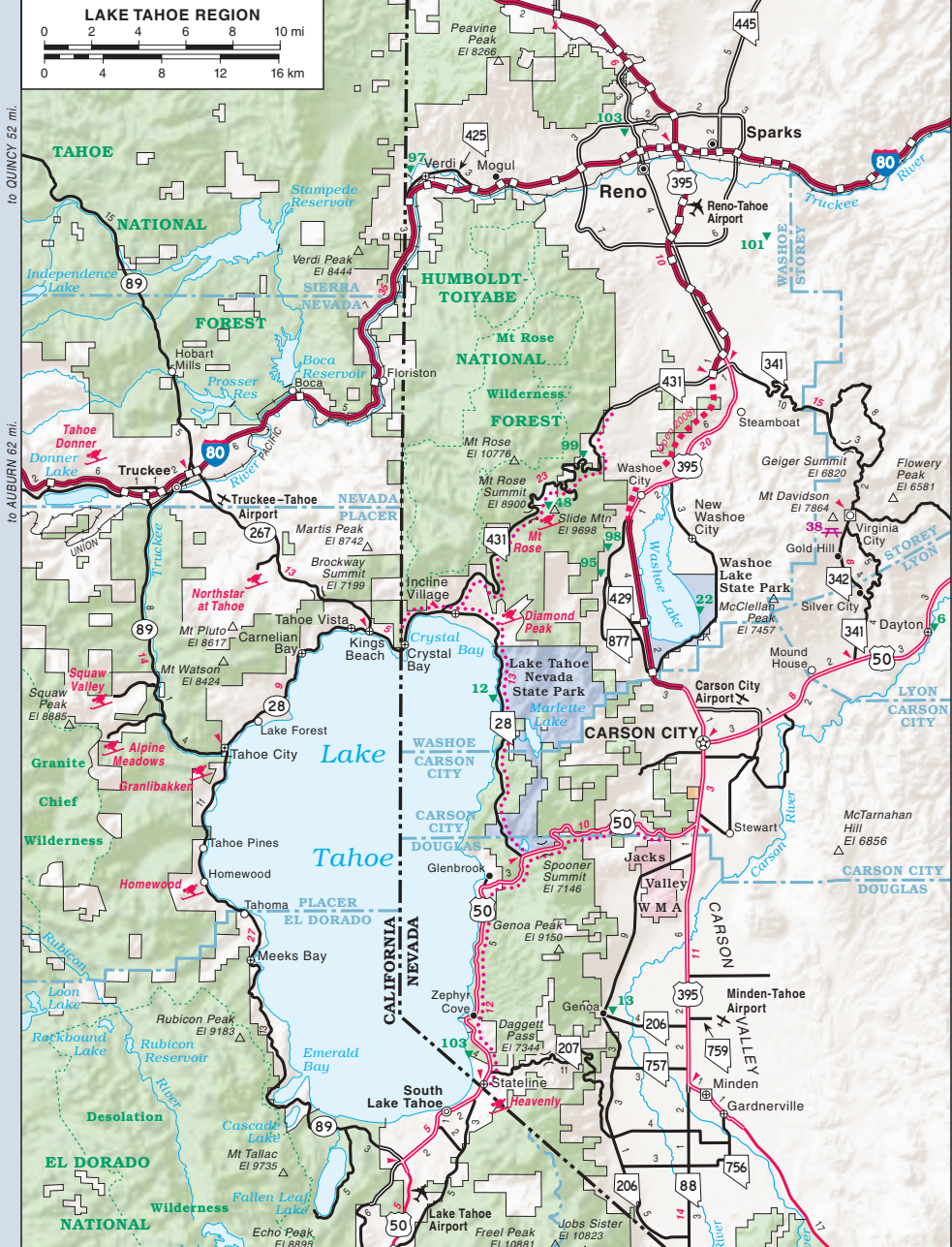
### NDOT MAP SALES

The Nevada Map Atlas contains 30-minute planimetric maps (1" = 4 miles) covering the entire state. \$12 (including tax and shipping).

To order, send check or money order to:  
Nevada Department of Transportation  
Map Section, Room 200  
1263 South Stewart Street  
Carson City, Nevada 89712

or phone (Visa, MC): (775) 888-7MAP  
or phone (Visa, MC): (775) 888-7627  
e-mail: [mapsales@ndot.state.nv.us](mailto:mapsales@ndot.state.nv.us)

Other map products are also available; a catalog and price list is available upon request.



You Drink & Drive  
**YOU LOSE**

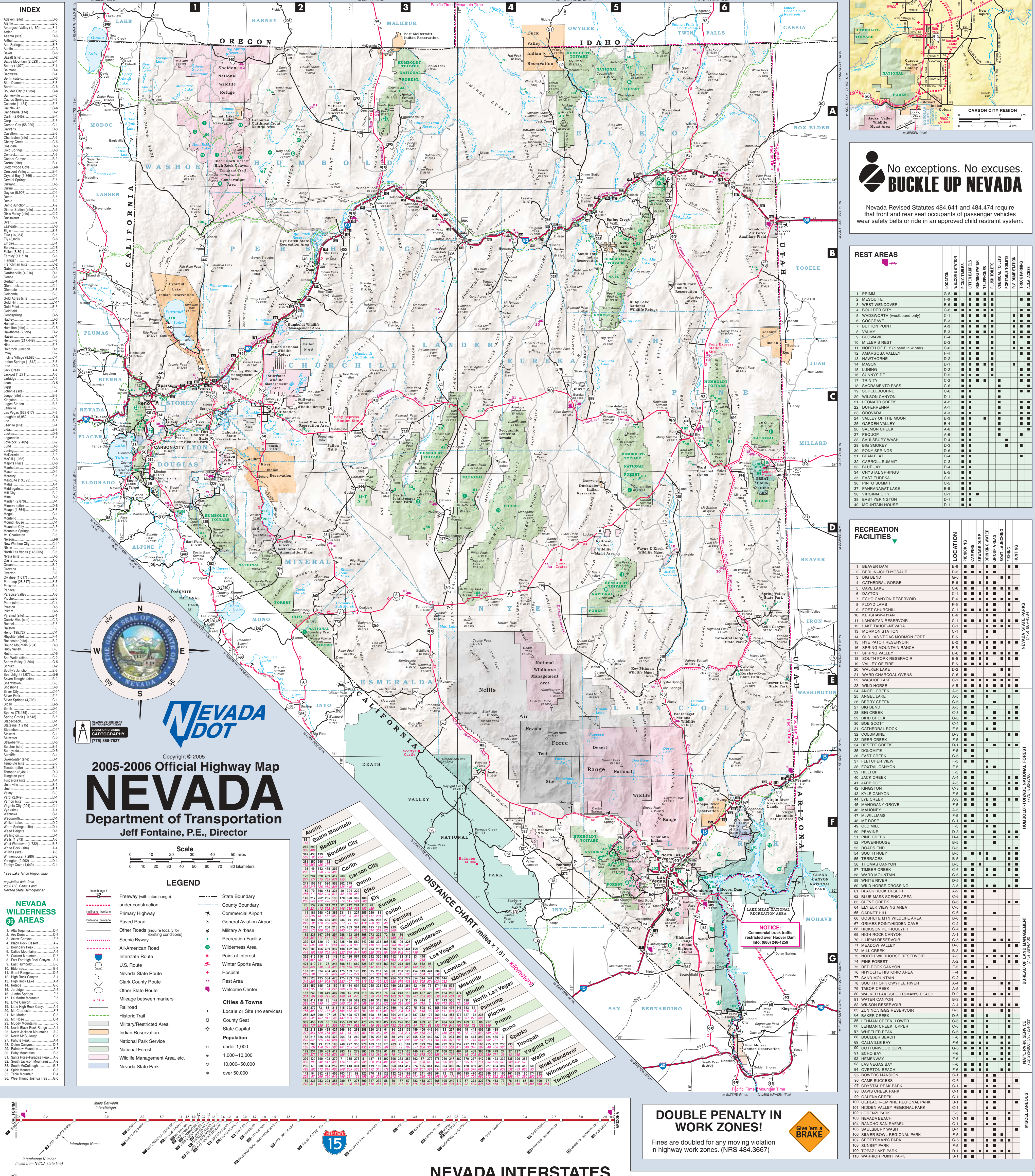
Nevada is a .08 Blood Alcohol Content State!  
(NRS 484.379)

**MOTORISTS ARE CAUTIONED TO INQUIRE LOCALLY ABOUT ROAD CONDITIONS BEFORE TRAVELING ON UNPAVED ROADS**

To reach the Highway Patrol, dial the Operator and ask for: ...Zenith-1-2000 or dial (cellular phones only): ...\*NHP  
In case of a medical emergency, contact the nearest fire or police department.

### INDEX

Advent (alt)	D-5
Alamo	D-6
Alamo Valley (1,169)	F-4
Alta	D-6
Alta (alt)	D-6
Alta Springs	E-6
Baker	E-6
Baker (alt)	E-6
Battle Mountain (2,629)	B-4
Battle Mountain (alt)	B-4
Benton	B-4
Berkley	D-4
Berlin	D-4
Berlin (alt)	D-4
Bismark	D-4
Black Rock Desert	D-4
Black Rock Desert (alt)	D-4
Black Rock Desert (2,143)	D-4
Black Rock Desert (alt)	D-4
Black Rock Desert (2,143)	D-4
Black Rock Desert (alt)	D-4
Black Rock Desert (2,143)	D-4
Black Rock Desert (alt)	D-4
Black Rock Desert (2,143)	D-4
Black Rock Desert (alt)	D-4
Black Rock Desert (2,143)	D-4
Black Rock Desert (alt)	D-4
Black Rock Desert (2,143)	D-4
Black Rock Desert (alt)	D-4
Black Rock Desert (2,143)	D-4
Black Rock Desert (alt)	D-4
Black Rock Desert (2,143)	D-4
Black Rock Desert (alt)	D-4



No exceptions. No excuses.  
**BUCKLE UP NEVADA**

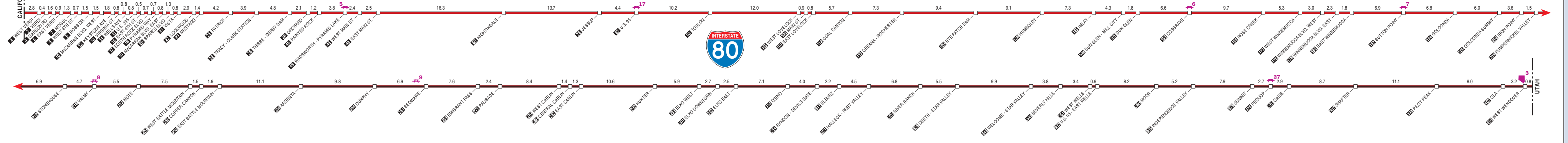
Nevada Revised Statutes 484.641 and 484.474 require that front and rear seat occupants of passenger vehicles wear safety belts or ride in an approved child restraint system.

### REST AREAS

REST AREA	LOCATION	WELCOME STATION	TRUCK TRAILERS	PICKUP TRUCKS	RESTROOMS	TELEPHONES	AMERICAN TRAILER	TRUCK TRAILERS	FLUOR TUBES	CHEMICAL TOILETS	PORTABLE TOILETS	TRUCK TRAILERS	AD.A. ACCESS
1 PRIMA	D-5												
2 BERLIN-CHITTYSAUR	F-2												
3 WEST WENDOVER	B-6												
4 BOULDER CITY	D-4												
5 WARDWORTH (westbound only)	C-1												
6 COBARRA	B-3												
7 WALBY POINT	B-3												
8 BEDWARE	B-4												
9 WALKER REST	C-2												
10 NORTH OF ELY (closed in winter)	C-2												
11 AMAROSA VALLEY	F-2												
12 MASON	D-1												
13 LUNING	D-5												
14 SUNNYSIDE	D-5												
15 TRINITY	C-2												
16 SACRAMENTO PASS	C-2												
17 SCHELLBOURNE	D-1												
18 WILSON CANYON	C-6												
19 LEONARD CREEK	A-2												
20 SUPERFINNA	A-1												
21 OROVADA	A-3												
22 VALLEY OF THE MOON	D-2												
23 GARDEN VALLEY	B-4												
24 SALMON POINT	C-1												
25 PEQUOP	A-8												
26 SAULSBURY SPRING	D-4												
27 BEAN FLAT	C-1												
28 PONY SPRING	D-8												
29 CRYSTAL SPRINGS	D-4												
30 CARROLL SUMMIT	C-3												
31 BLUE JAY	D-4												
32 CRYSTAL SPRINGS	D-4												
33 EAST EUKRA	C-5												
34 PINTO SUMMIT	C-5												
35 PARKMAN LAKE	C-1												
36 VIRGINIA CITY	C-1												
37 EAST WERNIGHT	D-1												
38 MOUNTAIN HOUSE	D-1												

### RECREATION FACILITIES

FACILITY	LOCATION	PICNICING	CAMPING	STORAGE CUMPS	BOAT LAUNCH	FISHING	HUNTING
1 BEAVER DAM	E-6						
2 BERLIN-CHITTYSAUR	F-2						
3 BIG BEND	F-2						
4 CATHEDRAL GORGE	C-6						
5 CAVE LAKE	C-6						
6 DAYTON	C-1						
7 ECHO CANYON RESERVOIR	E-6						
8 FLOYD LAMB	F-5						
9 FORT CHURCHILL	D-2						
10 KERSHAW-RYAN	D-3						
11 LAHONTAN RESERVOIR	D-3						
12 LAKE TAHOE-NEVADA	C-1						
13 MORRISON STATION	C-1						
14 OLD LAS VEGAS-MORMON FORT	B-2						
15 RYE PATCH RESERVOIR	B-2						
16 SPRING MOUNTAIN RANCH	F-5						
17 SPRING VALLEY	D-2						
18 SOUTH FORK RESERVOIR	B-5						
19 WALKER OF FIRE	C-2						
20 WALKER LAKE	D-2						
21 WARD CHARCOAL OVENS	C-6						
22 WADSWORTH LAKE	C-2						
23 WILD HORSE	A-3						
24 ANGEL CREEK	A-3						
25 ANGEL LAKE	A-3						
26 BERRY CREEK	C-6						
27 BIG BEND	C-3						
28 BIG CREEK	C-3						
29 BIRD CREEK	F-5						
30 BOB SCOTT	F-5						
31 CATHEDRAL ROCK	F-5						
32 COLUMBIA	D-3						
33 CRYSTAL LAKE	F-5						
34 DESERT CREEK	D-1						
35 EAST CANYON	C-1						
36 EAST CREEK	C-6						
37 EAST CREEK	C-6						
38 FLETCHER VIEW	F-5						
39 FORT CHURCHILL	D-2						
40 JACK CREEK	A-4						
41 JARVIS CREEK	A-3						
42 KINGSTON	C-3						
43 KYLE CANYON	C-2						
44 LYE CREEK	A-3						
45 MAHOGANY GROVE	F-5						
46 MANKNEY	F-5						
47 MOWATT	F-5						
48 MT. ROSE	C-1						
49 MUDY MOUNTAIN	F-5						
50 PEAVINE	D-3						
51 PINE CREEK	C-2						
52 POWERSHOWER	B-5						
53 RODEO END	B-5						
54 SOUTH FORK OWYHEE RIVER	A-4						
55 TABOR CANYON	A-5						
56 WALKER LAKE-SHORTSMAN'S BEACH	D-2						
57 WATER CANYON	F-5						
58 WILSON RESERVOIR	A-4						
59 ZINNWOOD RESERVOIR	D-6						
60 BAKER CREEK	D-6						
61 LEHMAN CREEK, LOWER	C-6						
62 LEHMAN CREEK, UPPER	C-6						
63 BOULDER BEACH	C-6						
64 BULLHORN BEACH	C-6						
65 CALLEJA BAY	E-6						
66 COTTONWOOD COVE	E-6						
67 ECHO BAY	F-6						
68 HERMENEY	F-6						
69 LAS VEGAS BAY	F-6						
70 OVERTON BEACH	C-1						
71 BOWERS MANSION	C-1						
72 CAMP SUCCESS	C-6						
73 CRYSTAL PEAK PARK	C-1						
74 DAVIS CREEK PARK	C-1						
75 GALERIA PARK	C-1						
76 GERLACH-EMPIRE REGIONAL PARK	B-1						
77 HODDEN VALLEY REGIONAL PARK	B-1						
78 KOROZUK PARK	C-1						
79 NEVADA BEACH	C-1						
80 RANCHO SAN RAFAEL	C-1						
81 SAULSBURY BEACH	F-5						
82 SILVER BOWL REGIONAL PARK	F-5						
83 SPORTSMAN'S PARK	F-5						
84 SUNSET PARK	D-1						
85 TOPAZ LAKE PARK	D-1						
86 WARDWORTH POINT PARK	B-1						



**DOUBLE PENALTY IN WORK ZONES!**  
Fines are doubled for any moving violation in highway work zones. (NRS 484.3667)

